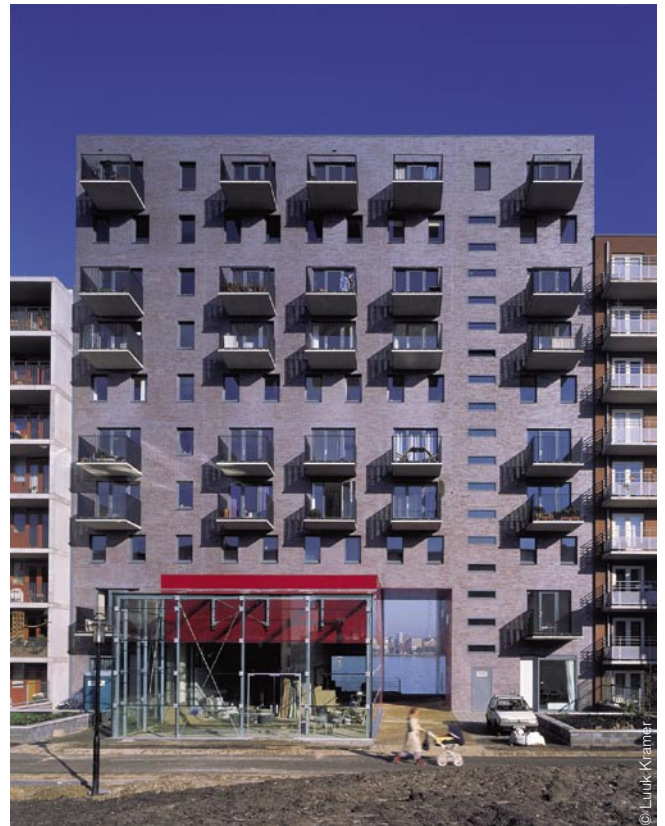


'EINDE VAN DE WERELD' RESIDENTIAL BUILDING
Sumatrakade 565-593, 611-615, Java-eiland, Amsterdam

MEYER
VAN SCHOOTEN
ARCHITECTEN BV

This housing project occupies the site of a building called 'Het Einde van de wereld' ('The End of the World'). The original intention was to retain that building as a reminder of the history of the Eastern Docks district of Amsterdam. Eventually it was however decided to demolish the old building and replace it by a new one. The new 9-storey building rises above its neighbours and contains 29 one or two bedroom units. The ground floor contains two commercial spaces and a café/restaurant which reaches to the glazed extension on the inner site. The units are maisonettes which are arranged along three corridors at the second, fifth and eighth floor levels respectively. Each corridor offers a different kind of prospect of the River IJ and Java Island. The lift, whose shaft is glass-walled on one side, also offers a view of the River IJ. Each dwelling consists of one and a half stories - a half storey adjacent to the corridor and a whole one above or below it. This gives them a double orientation, both towards the River IJ and towards the south-facing internal gardens. The aubergine-coloured wall opens at the fifth floor level in a tall archway and loggia. The inner walls of the recess are lined with red panelling. The French casements with glass balustrades lie flush with the front facade, as does the vertical strip fenestration of the stair well and lift shaft. This reinforces the clean lines of the brickwork and contrasts strongly with the deep reveals of the windows.

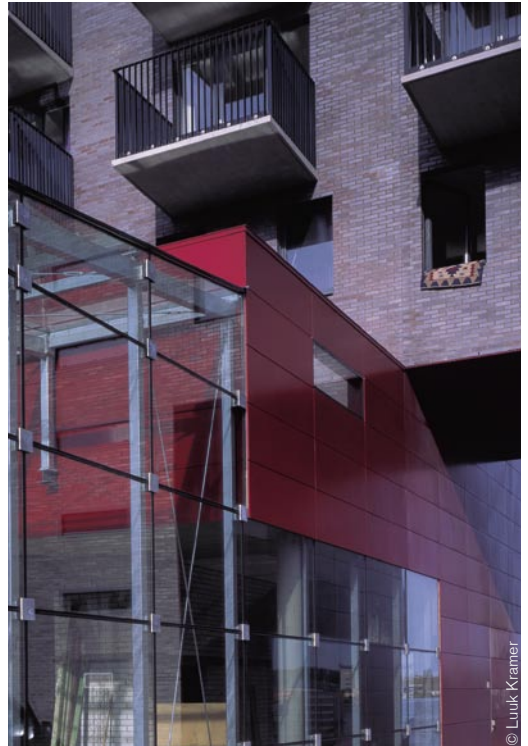




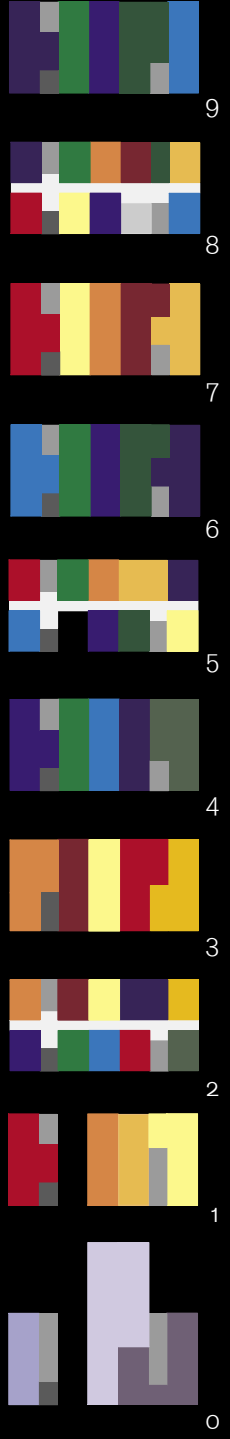
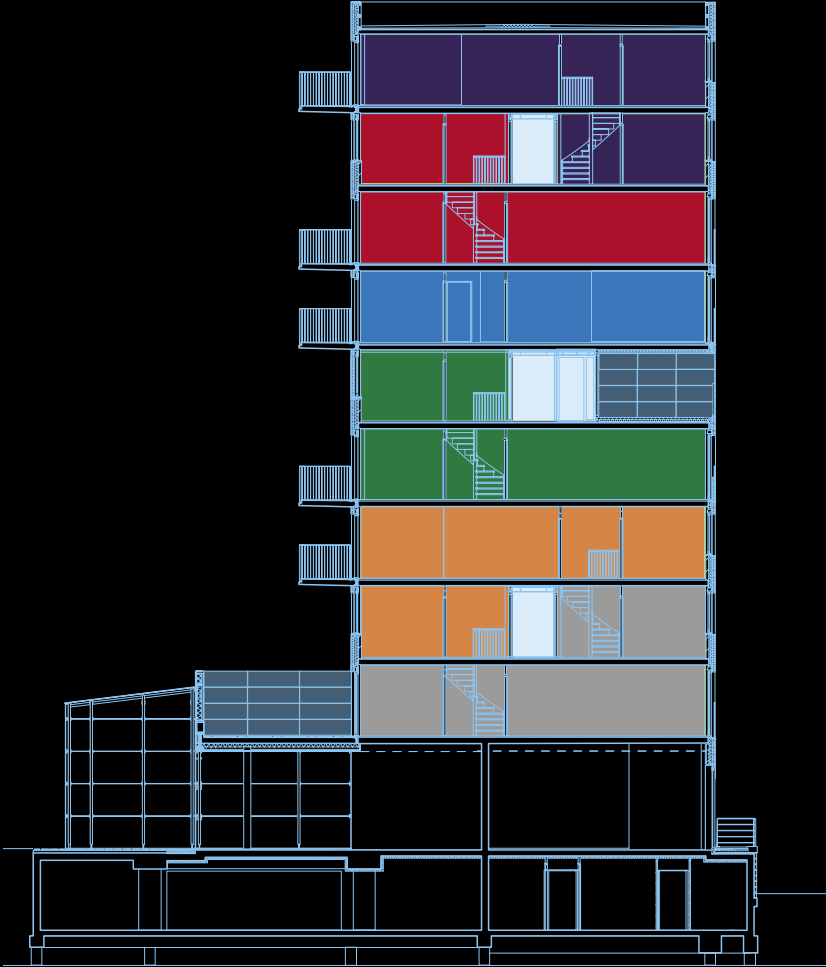
© Jan Willem Kaldenbach

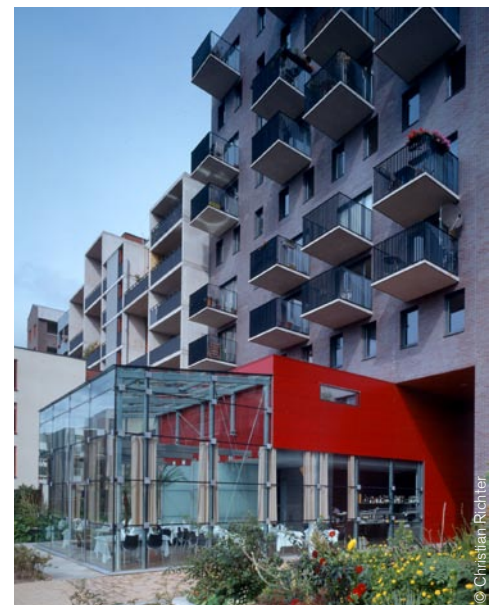
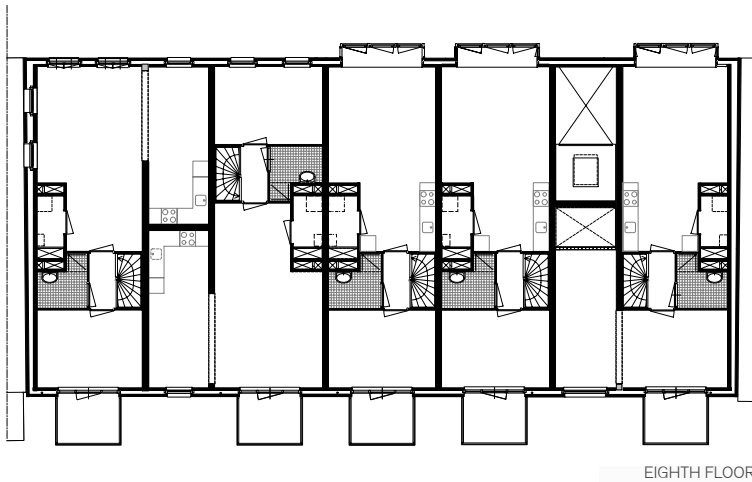
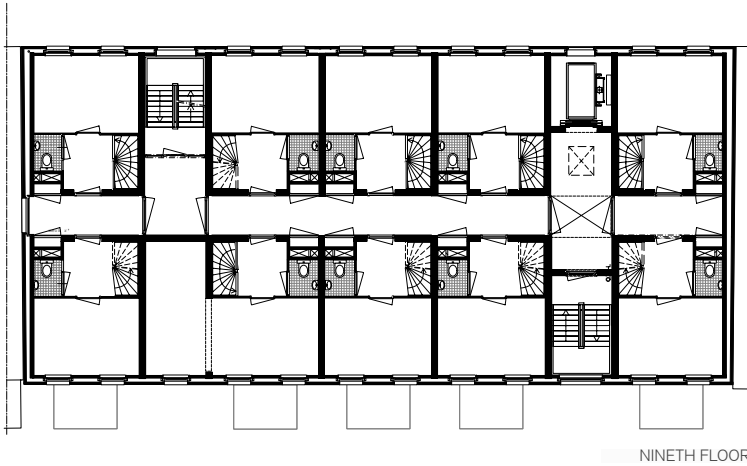


© Christian Richter



© Luuk Kramer





Program: 29 owner-occupies apartments, 2 business spaces, 1 catering establishment, underground parking
 Client: woningstichting Olympus Groep (formerly ACOB), Amsterdam in coöperation with Latei, Amersfoort
 Architect: Meyer en Van Schooten Architecten BV, Amsterdam
 Project architect: Roberto Meyer and Jeroen van Schooten
 Project team: Sjoerd Landman, Juliette Top-Haenen
 Contractor: Bouw- Aannemingsbedrijf Teerenstra bv, Heiloo
 Structural Engineer: Konstruktieburo Krabbendam-Boerkoel, Soest
 Services Engineer: Ir T.H. Hoogedoorn raadgevend ingenieursbureau bv, Zeist
 Gross floor area: 3200 m2
 Design: 1997
 Completion: 2000