

ING GROUP HEADQUARTERS, AMSTERDAM 1998-2002
 Amstelveenseweg 500, Amsterdam

The headquarter offices for the ING Group occupies a long, narrow site adjacent to the motorway ring around Amsterdam. The location is at the junction of two areas, the cosmopolitan high-rise of Zuidas and the green zone of De Nieuwe Meer. The building has been kept low on the green side, with the cantilevered auditorium as a projecting element, and rises towards the urban side.

The building rests on stilts measuring 9 to 12,5 metres in height, so that travellers on the motorway still have a glimpse of the area behind the building. This arrangement also means that none of the offices in the building have their view blocked by the motorway embankment. The entrance zone is ensconced between the stilts.

The new headquarters symbolizes the banking and insurance conglomerate as a dynamic, fast-moving international network. Transparency, innovation, eco-friendliness and openness were the main starting points for the design. The building has an innovative interior environment control system. The double-skin facade allows natural ventilation of the offices without admitting traffic noise. An advanced air treatment system and the use of an aquifer under the building and a mechanical pumping system to provide cold/warm thermal storage make this building energy-efficient.

The atmosphere of the interior is richly varied and features an alternation of open and sheltered spaces. Successive storeys intermingle and offer recurrent glimpses from one to another. Areas with a panoramic view, such as the restaurant, the large conference room and the auditorium, exist alongside introverted spaces. Atriums, loggias, and gardens, both internal and external, are distributed through the building at various levels.

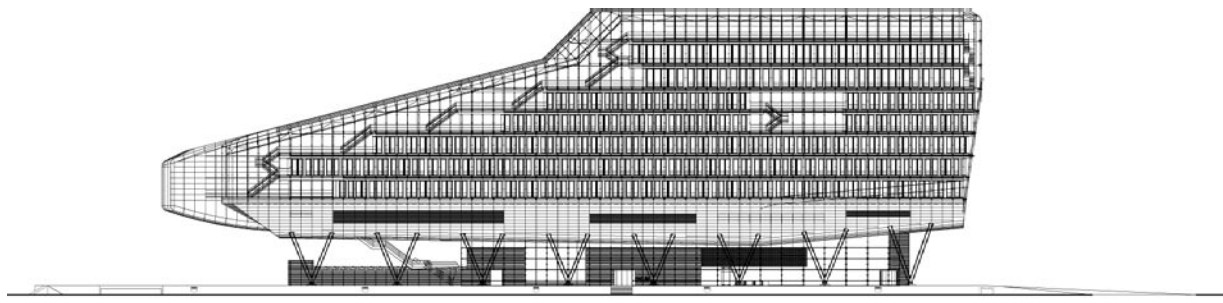


© Georgijs Feesky

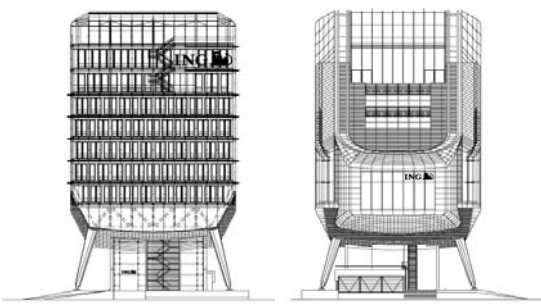




© Georges Fessy



SOUTH ELEVATION

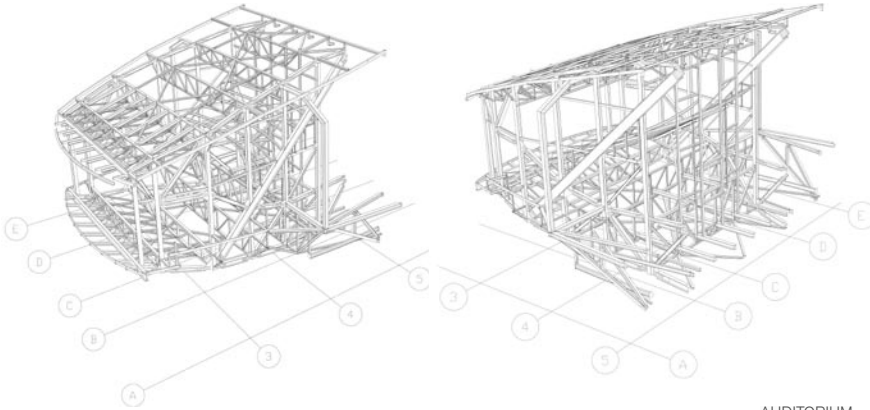


EAST ELEVATION

WEST ELEVATION



SECTION



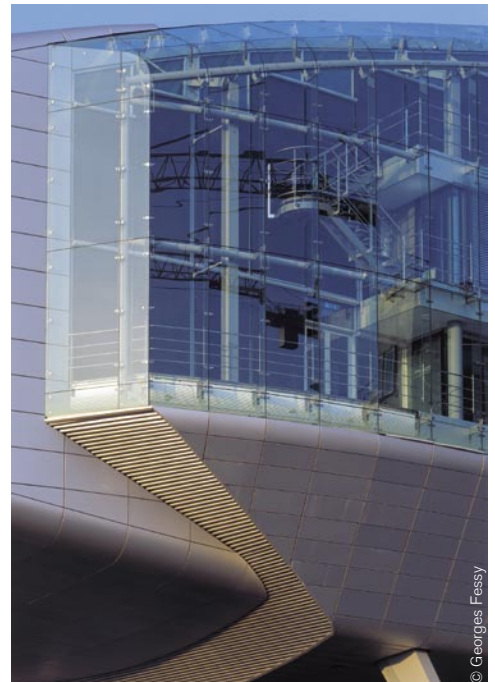
AUDITORIUM



© Georges Fessy



© Georges Fessy



© Georges Fessy

Program: Offices, conference rooms, waiting rooms, foyer, auditorium, reception hall, restaurant, dining room, gardens, underground car park and bicycle shed

Client: Ontwikkelingscombinatie ING Blauwhoed v.o.f., Rotterdam

Architect: Meyer en Van Schooten Architecten BV, Amsterdam

Project architects: Roberto E. Meyer and Jeroen W. van Schooten

Project leader: Barry van Waveren

Project team: Felix van Bommel, Martien Borggreve, Arno Compas, Eric Mesman, Juliëtte Top-Haenen, Christian Quesada van Beresteyn, Jean Marc Saurer

Interior Designer: Design Group Trude Hooykaas bv and Meyer en Van Schooten Architecten B.V.

Landscape Architect: Michael R. van Gessel

Projectmanagement: IPMMC Vastgoed, Utrecht

Architectural contractor: Bouwcombinatie SamenwerkING, Amsterdam, In which the following parties participate:

- Aannemingsmaatschappij J.P. van Eesteren b.v., Barendrecht
- HBG Utiliteitsbouw b.v., Amsterdam
- Heijmans IBC Bouw B.V., Amsterdam
- Grootint b.v. (onderdeel van Heerema), Zwijndrecht
- Volker Wessels Stevin Bouw- en Vastgoed b.v., Rijswijk

Contractor steel construction: StaalBouwCombinatie HGO, p/a Krimpen a/d IJssel, Under the supervision of, and in which the following parties participate:

- Grootint
- Hollandia
- Oostingh Staalbouw

Structural Engineer: Aronsohn raadgevende ingenieurs bv, Rotterdam

Services Engineer: Raadgevend Technisch Buro Van Heugten bv, Nijmegen

Gross floor space: 20.000 m2 (excl. car park)

Prizes Headquarters ING Group:

2002 Netherlands Steel Prize (Nationale Staalprijs 2002)
Nomination Mies van der Rohe Award 2003
Architecture & Technology Award - Special commendation
Glass Award 2002 (Nederlandse Glas Award 2002)

2003 The Dutch Construction Prize 2003 (De Nederlandse Bouwprijs 2003)
Aluminium Award Architecture 2003 (Nederlandse Aluminium Award Architectuur 2003)